



Series :

CF8(SS304) : GBV2F0BA15

CF8M(SS316) : GBV2F1BA15

WCB(CARBON STEEL) : GBV2F3BA15

**HIGH PLATFORM FLANGED BALL VALVE
FLANGE END ANSI 150#**



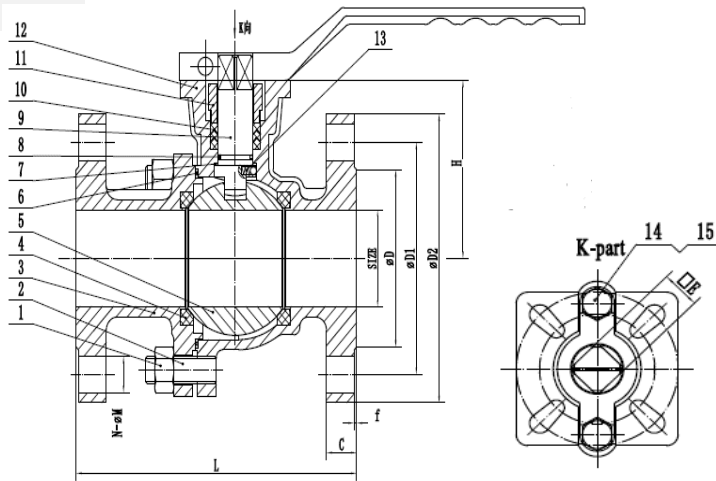
SPECIFICATION

- Valve design :API 608;
- Valve inspection and testing :API 598;
- Flange :ASME B16.5
- The Valve face to face :ASME B16.10

APPLICATIONS

- applications requiring tight shut-off, high flow capacity, and reliable performance under challenging conditions
- APPLICABLE MEDIA :WATER,STEAM,OIL,ACETIC ACID ETC

NO.	PART NAME	MATERIAL LIST		
1	NUT	A2-70	A2-70	A194 2H
2	Ex-hexaonal screw	A2-70	A2-70	A193 B7
3	ANTISTATIC DEVICE	304	316	304
4	BODY	CF8	CF8M	WCB
5	GLAND	CF8	CF8	WCB
6	STEM	304	316	304
7	PACKING	PTFE	PTFE	PTFE
8	O-RING	FKM	FKM	FKM
9	THRUST PAD	PTFE	PTFE	PTFE
10	SEALING GASKET	PTFE	PTFE	PTFE
11	BALL	SS304	SS316	SS304
12	SEAT	PTFE	PTFE	PTFE
13	BONNET	CF8	CF8M	WCB
14	SCREW BOLT	A193 B8	A193 B8	A193 B7
15	HEXAGONAL NUT	A194 8	A194 8	A194 2H



SIZE	DN15	DN20	DN25	DN32	DN40	DN50	DN65	DN80	DN100	DN125	DN150
L	108	117	127	140	165	178	190	203	229	356	394
H	50	55	65	72	82	91	112	122	150	190	209
H1	9	9	11	11	14	14	17	17	22	27	27
D	51	56	67	76	81	96	116	126	151	182	212
D1	70	75	90	100	125	135	140	155	175	185	210
D2	95	100	125	135	140	155	175	185	210	250	280
C	12	14	14	16	16	16	18	18	18	20	22
f	1	1	1	2	2	2	2	2	2	2	2
N-M	4-15	4-15	4-19	4-19	4-19	4-19	4-19	8-19	8-19	8-23	8-23
E	9	9	11	11	14	14	17	17	22	27	27
ISO 5211	F03/F04	F03/F04	F04/F05	F04/F05	F05/F07	F05/F07	F07/F10	F07/F10	F10/F12	F12/F14	F12/F14



GPRO Valve Sdn Bhd
7, Lot 752 Jalan Subang 3, Taman Perindustrian
SG, Penaga 47610 Subang Jaya, Selangor, MALAYSIA

Tel: +6 03 8023 6900
Email: info@gprovalve.com.my