



**Series:**

- CF8(SS304) : GBV2F0BA15 + GVA - 00**
  - CF8M(SS316) : GBV2F1BA15 + GVA - 00**
  - WCB(CARBON STEEL) : GBV2F3BA15 + GVA - 00**
- ELECTRIC FLANGED BALL VALVE**

**FLANGES END ANSI 150#**

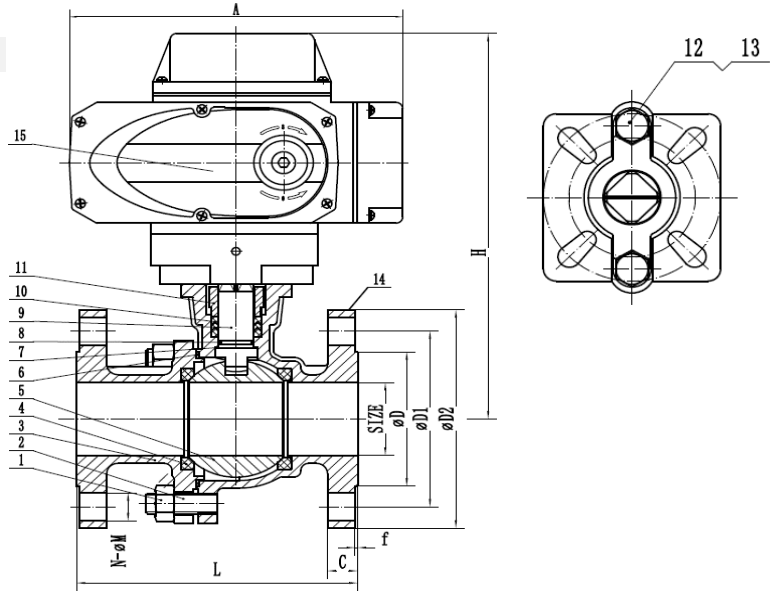
**SPECIFICATION**

- VALVE DESIGN :API 608;
- VALVE INSPECTION AND TESTINF :API 598;
- FLANGED :ASME B16.5;
- THE VALVE FACE TO FACE :ASME B16.10.

**APPLICATIONS**

• control the flow of various fluids and gases in applications like oil and gas, water treatment, power generation, chemical processing, and industrial manufacturing

MATERIAL LIST				
1	BODY	CF8	CF8M	WCB
2	SCREW BOLT	A193 B8	A193 B8	A193 B7
3	BONNET	CF8	CF8M	WCB
4	SEAT	PTFE	PTFE	PTFE
5	BALL	SS304	SS316	SS304
6	SEAL GASKET	PTFE	PTFE	PTFE
7	THUST PAD	PTFE	PTFE	PTFE
8	O-RING	FKM	FKM	FKM
9	PACKING	PTFE	PTFE	PTFE
10	STEM	304	316	304
11	GLAND	CF8	CF8	WCB
12	EX-HEXAGONAL SCREW	A2-70	A2-70	A194 B7
13	NUT	A2-70	A2-70	A193 2H
14	HEXAGONAL NUT	A194 8	A194 8	A194 2H
15	ELECTRIC ACYUATOR	ASSEMBLY	ASSEMBLY	ASSEMBLY



SIZE	DN15	DN20	DN25	DN32	DN40	DN50	DN65	DN80	DN100	DN125	DN150
L	108	117	127	140	165	178	190	203	229	356	394
H	201	206	216	223	252	261	320	330	358	398	417
D	51	56	67	76	81	96	116	126	151	182	212
D1	70	75	90	100	105	120	140	150	175	210	240
D2	95	100	125	135	140	155	175	185	210	250	280
C	12	14	14	16	16	16	18	18	18	20	22
f	1	1	1	2	2	2	2	2	2	2	2
N-M	4-15	4-15	4-19	4-19	4-19	4-19	4-19	8-19	8-19	8-23	8-23
A	160	160	160	160	196	196	256	256	256	256	280
ACTUATOR	KST08A*	KST08A*	KST08A*	KST08A	KST08A	KST08A	KST08A	KST15A	KST25A	KST40A	KST60A

