



**Series :**

**CF8(SS304) : GBV2F0BP16**

**CF8M(SS316) : GBV2F3BP16**

**WCB(CARBONSTEEL) : GBV2F1BP16**

**2 PC BALL VALVE FLANGE END PN16 WITH ISO MOUNTING PAD**



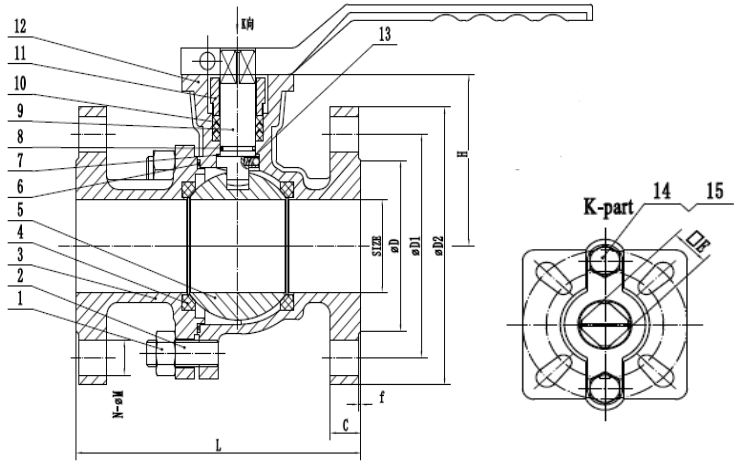
**SPECIFICATION**

- Valve design : 1.3 GERMAN STANDARD DESIGN STANDARDS
- Valve inspection and testing : API 598
- Flange : EN 1092-1
- The Valve face to face : ASME B16.34

**APPLICATIONS**

- applications requiring tight shut-off, high flow capacity, and reliable performance under challenging conditions
- APPLICABLE MEDIA : WATER, STEAM, OIL, ACETIC ACID ETC

NO.	PART NAME	MATERIAL LIST			
1	NUT	A2-70	A2-70	A194 2H	
2	Ex-hexagonal screw	A2-70	A2-70	A193 B7	
3	ANTISTATIC DEVICE	304	316	304	
4	BODY	CF8	CF8M	WCB	
5	GLAND	CF8	CF8	WCB	
6	STEM	304	316	304	
7	PACKING	PTFE	PTFE	PTFE	
8	O-RING	FKM	FKM	FKM	
9	THRUST PAD	PTFE	PTFE	PTFE	
10	SEALING GASKET	PTFE	PTFE	PTFE	
11	BALL	SS304	SS316	SS304	
12	SEAT	PTFE	PTFE	PTFE	
13	BONNET	CF8	CF8M	WCB	
14	SCREW BOLT	A193 B8	A193 B8	A193 B7	
15	HEXAGONAL NUT	A194 8	A194 8	A194 2H	



SIZE	DN15	DN20	DN25	DN32	DN40	DN50	DN65	DN80	DN100	DN125	DN150
L	115	120	125	130	140	150	170	180	190	325	350
H	51	55	63	71	81	88	114	124	147	179	209
H1	275	292	317	332	338	358	400	427	475	526	587
D	95	105	115	140	150	165	185	200	220	250	285
D1	70	75	90	100	125	135	140	155	175	185	210
D2	95	100	125	135	140	155	175	185	210	250	280
C	15	20	25	32	38	50	64	76	100	125	150
f	2	2	2	2	2	2	2	2	2	2	2
N-M	4-14	4-14	4-14	4-18	4-18	4-18	4-18	8-18	8-18	8-18	8-22
E	9	9	11	11	14	14	17	17	22	27	27
ISO 5211	F03/F04	F03/F04	F04/F05	F04/F05	F05/F07	F05/F07	F07/F10	F07/F10	F10/F12	F12/F14	F12/F14



GPRO Valve Sdn Bhd  
 7, Lot 752 Jalan Subang 3, Taman Perindustrian  
 SG, Penaga 47610 Subang Jaya, Selangor, MALAYSIA

Tel: +6 03 8023 6900  
 Email: info@gprovalve.com.my