



Series GBV350B - Stainless Steel 3-pc Body High Pressure Ball Valve Direct Mounting Type 2000PSI



SPECIFICATION

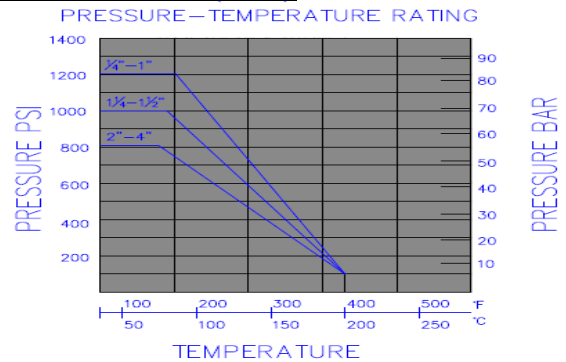
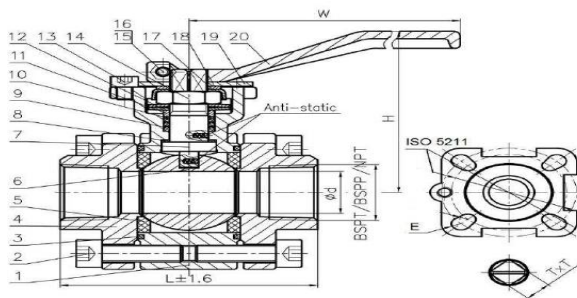
- Three-Piece-Body API607 Fire safe
- ISO 5211 DIN3337 direct mounting pad
- End Connection: Threaded End BSPT
Options for Socket Weld, Butt Weld
- Working Pressure: 1/4 ~ 2" 2000 PSI W.O.G.
2-1/2" ~ 4" 1000 PSI W.O.G.

APPLICATIONS

- Suitable for Water, Oil, Gas, Air & Steam
- Working temperature up to 180° C

MATERIAL LIST

NO.	PART NAME	MATERIAL	NO.	PART NAME	MATERIAL
1	Body	CF8	11	Snap Ring	SS304
2	Seat	R-PTFE	12	Handle	SS304
3	Ball	SS316	13	Stopper	SS304
4	Gasket	R-PTFE	14	Bolt	SS304
5	Bolt	SS304	15	Handle Sleeve	SS304
6	Bonnet	CF8	16	Nut	SS304
7	Stem	SS304	17	Spring Washer	SS304
8	Stem Washer	R-PTFE	18	Bolt	SS304
9	Packing	R-PTFE	19	Bolt	SS304
10	Gland	SS304	20	Nut	SS304



DIMENSIONS (mm)

Size	Inch	1/4	3/8	1/2	3/4	1	1-1/4	1-1/2	2	2-1/2	3	4
	DN	8	10	15	20	25	32	40	50	65	80	100
d		8	10	15	20	25	32	40	50	65	80	100
L		65	65	71	75	82	98	110	126	185	205	235
H		65	65	63	74	86	95	116	122	147	153	167
W		131	131	131	131	167	167	193	193	242	272	295
ISO 5211	W1	9x9	9x9	9x9	9x9	11x11	11x11	14x14	14x14	17x17	17x17	17x17
	E	36/42	36/42	36/42	36/42	42/50	42/50	50/70	50/70	70/102	70/102	70/102
	ISO	F03/04	F03/04	F03/04	F03/04	F04/05	F04/05	F05/07	F05/07	F07/10	F07/10	F07/10
Weight (kg)		0.63	0.61	0.63	0.74	1.09	1.58	2.12	2.82	5.86	8.17	13.47



GPRO Valve Sdn Bhd
7, Lot 752 Jalan Subang 3, Taman Perindustrian
SG, Penaga 47610 Subang Jaya, Selangor, MALAYSIA

Tel: +6 03 8023 6900
Email: info@gprovalve.com.my