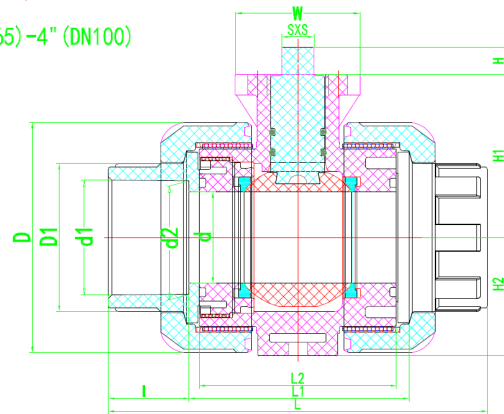
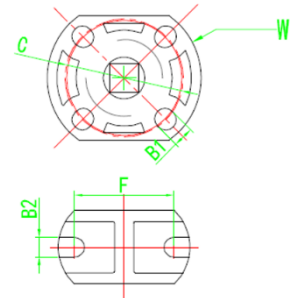
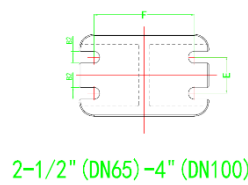
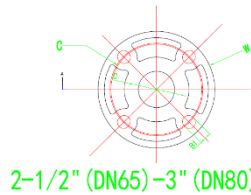
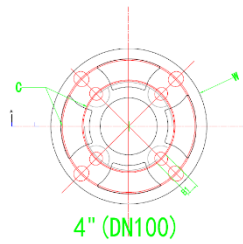
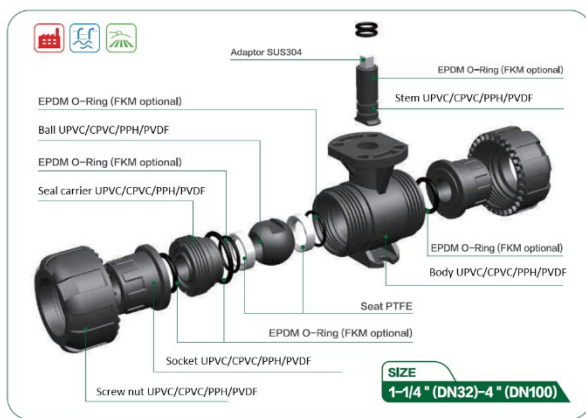
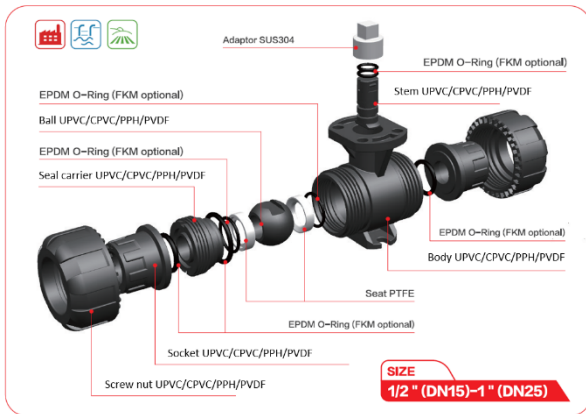


TU BALL VALVE WITH MOUNTING PAD (UPVC/CPVC/PPH/PVDF)



Parameters

Size: 1/2" (DN15)~4" (DN100)

Socket: DIN/ANSI/JIS/CNS

Thread: PT/NPT/BSPT

Pressure Rating: 1/2" (DN15)~2" (DN50) PN16 2-1/2" (DN65)~4" (DN100) PN10

NIT: MM

SIZE	d	L	I	d1						d2					
				UPVC/CPVC				PPH	PVDF	UPVC/CPVC				PPH	PVDF
				ANSI	DIN	JIS	CNS	DIN	DIN	ANSI	DIN	JIS	CNS	DIN	DIN
1/2" (DN15)	15	112	23	20.28	22.35	21.54	22.35	19.50	19.20	19.95	21.75	21.25	21.75	19.30	19.00
3/4" (DN20)	20	120	26	25.30	26.40	26.87	26.40	24.40	24.20	24.95	25.70	26.58	25.70	24.10	23.90
1" (DN25)	25	136	29	32.30	32.40	33.65	34.50	31.30	31.10	31.95	31.70	33.28	33.90	31.00	30.90
1-1/4" (DN32)	32	150.5	32.5	40.35	38.45	42.40	42.50	39.30	39.00	39.95	37.65	42.05	41.90	38.90	38.80
1-1/2" (DN40)	40	168	35.5	50.35	48.45	48.50	48.45	49.30	48.90	49.95	47.65	48.12	47.65	48.90	48.70
2" (DN50)	50	180	38.5	63.40	60.50	60.60	60.50	62.20	61.90	62.90	59.60	60.18	59.60	61.70	61.60
2-1/2" (DN63)	63	235	44.5	75.40	76.50	73.35	76.50	74.00	73.70	74.90	75.60	72.85	75.60	72.70	73.40
3" (DN80)	75	265	51	90.45	89.60	89.30	89.60	88.80	88.60	89.90	88.60	88.70	88.60	87.40	88.20
4" (DN100)	90	304	61.5	110.45	114.60	114.75	114.60	109.00	108.40	109.90	113.60	114.10	113.60	107.00	108.00

Size	D	D1	L1	L2	H	H1	H2	SxS	W	C	B1	B2	E	F	Operating torque (N.M)
1/2" (DN15)	56	32	66	57.00	8.20	44.30	28.70	9x9	48.00	36.00	M5	6.00	/	31.00	2.00
3/4" (DN20)	65	37	68	59.00	8.20	53.30	32.70	9x9	48.00	36.00	M5	6.00	/	35.00	2.50
1" (DN25)	76	45.5	76	68.00	9.20	60.60	38.75	9x9	48.00	36.00	M5	6.00	/	42.00	3.00
1-1/4" (DN32)	87	55.5	85	76.00	11.00	61.50	44.25	11x11	68.00	50.00	M6	8.00	/	56.00	3.50
1-1/2" (DN40)	101	62	95.5	86.50	12.00	71.50	51.50	11x11	68.00	50.00	M6	8.00	/	58.00	4.50
2" (DN50)	121	79	103	92.00	12.00	82.50	62.00	11x11	68.00	50.00	M6	8.00	/	70.00	5.50
2-1/2" (DN63)	150	94.2	146	134.00	15.00	94.50	79.50	14x14	90.00	70.00	M8	10.00	30.00	84.00	7.50
3" (DN80)	169.5	110	163	148.00	15.00	105.00	90.00	14x14	90.00	70.00	M8	10.00	32.00	90.00	8.50
4" (DN100)	190	132	181	157.00	15.00	117.50	96.00	14x14	120.00	70/100	M8/M10	10.00	40.00	100.00	12.00